

# MONTHLY MEMBERSHIP PROGRESS REPORT

LOCATION NEBRASKA

District 38 I

Results as of: 3/31/2021

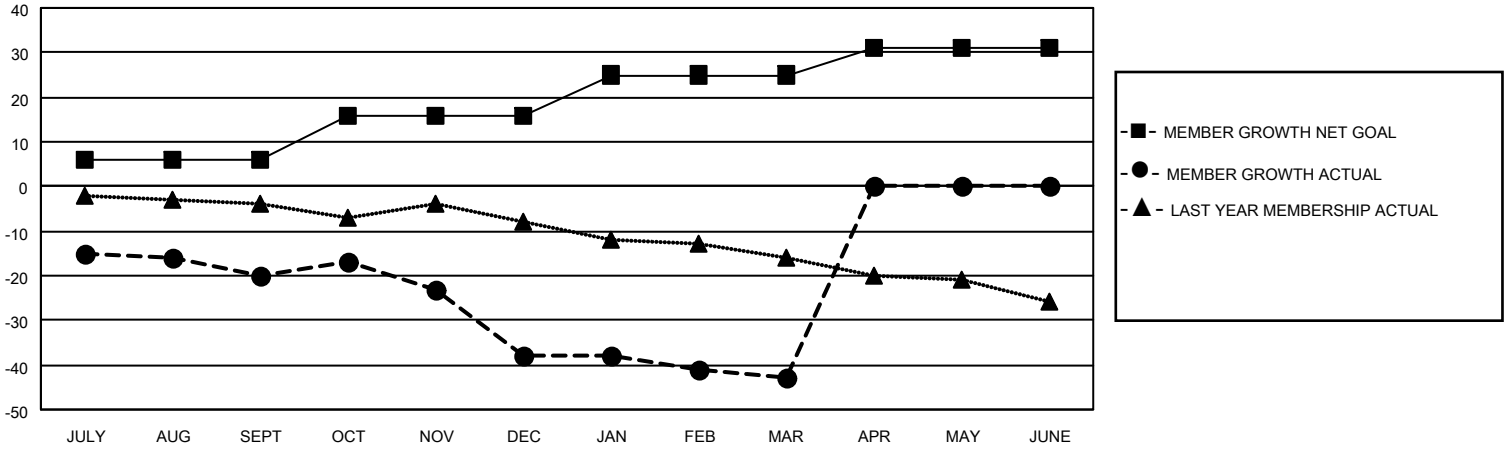
Clubs			
RESULTS FOR 2020-2021			
QUARTER	NEW CLUB GOAL	NEW CLUBS	DROPPED CLUBS
JULY/AUG/SEPT	0	0	0
OCT/NOV/DEC	0	0	2
JAN/FEB/MAR	0	0	0
APR/MAY/JUNE	1	0	0

Members			
RESULTS FOR 2020-2021			
QUARTER	MEMBER GROWTH NET GOAL	MEMBER GROWTH ACTUAL	DROPPED MEMBERS ACTUAL (including transfers)
JULY/AUG/SEPT	6	12	30
OCT/NOV/DEC	10	9	27
JAN/FEB/MAR	9	7	11
APR/MAY/JUNE	6	0	0

**GOALS AND ACTUAL NEW CLUBS CUMULATIVE**



**GOALS AND ACTUAL MEMBERS CUMULATIVE**



DROPPED CLUBS: 2	14 CLUBS OF 35 ADDED 1 OR MORE NEW MEMBERS	<u>GENDER DISTRIBUTION</u>
<u>DROPPED MEMBERS</u>	<a href="#">CLICK HERE FOR CUMULATIVE MEMBERSHIP DATA</a>	MALE 572 (72.13%)
DECEASED 11		FEMALE 221 (27.87%)
CLUB CANCELLED 10		TOTAL FAMILY UNIT MEMBERS 200
OTHER 47		FAMILY MEMBERS PAYING HALF DUES 101
<b>TOTAL 68</b>		